

LEOPARD HILLS

PRIVATE GAME RESERVE



Leopard Hills is located in the western sector of the renowned Sabi Sand Private Game Reserve, bordering the world famous Kruger National Park.

This 8 Suite exclusive Lodge is spectacularly situated atop a rocky outcrop, offering magnificent views over the bush and a natural waterhole on the plains below.

2026 LEOPARD HILLS RACK RATES – FULLY INCLUSIVE

VALIDITY	PER PERSON PER NIGHT SHARING / SINGLE	
1 January 2026 – 31 December 2026	R 26 300	
PRIVATE VEHICLE	A private vehicle can be booked for all photographic safari requests or guests wanting their own private vehicle per day (Subject to availability upon request)	R 26 300

Please Note: No single supplement for the first single suite confirmed in any one reservation. Second single suite or more pay a 50% supplement on the per person sharing rate. PILOT ROOM: R 2 400 per person per night.



AIR & ROAD TRANSFERS

Please contact reservations for air and road transfer routings and timings which are quoted as nett rates.

MPUMALANGA HELICOPTER CO.

2-HR HELICOPTER ADVENTURE FROM ANY OF THE LODGES IN THE TIMBAVATI PRIVATE NATURE RESERVE & SABI SAND GAME RESERVE TO THE BLYDE RIVER CANYON

1 Jan 2026 – 31 Dec 2026	Cascades & Canyon Spectacular – 2 hrs (incl. picnic stop)	R 58 400 min 1-2 people	R 61 700 for 3 people	R 65 000 for 4 people
--------------------------	---	-------------------------	-----------------------	-----------------------



PLEASE NOTE: Drones are **STRICTLY PROHIBITED** in the Sabi Sand Game Reserve, failure to comply with this rule will result in a heavy fine or arrest by reserve management.



LEOPARD HILLS PRIVATE GAME RESERVE TERMS & CONDITIONS

TARIFFS ARE QUOTED: Inclusive of 15% VAT In South African Rands. Subject to availability.

TARIFF CHANGES: All tariffs quoted are subject to change, without prior notice, however rates quoted for confirmed bookings will be honoured.

TARIFFS INCLUDE: Luxury accommodation. Two game drives per day. Optional walking safaris. Three meals daily. Tea & Coffee. All beverages excluding premium wines from our wine cellar. Laundry Service. Road transfer from the Leopard Hills Airstrip to the Lodge. Complimentary WIFI in all suites.

TARIFFS EXCLUDE: Curio shop purchases. Premium wines from our wine cellar. Telephone calls. Guest Conservation Levy. Lodge Transfers. Airstrip Landing Fees. Spa treatments.

ACCOMMODATION: Eight luxury air-conditioned suites, complete with private plunge pools, mini-bar, outside showers, indoor showers and great views.

The lodge accommodates a maximum of sixteen guests.

FACILITIES & ACTIVITIES: Central swimming pool. Open air veranda. Lounge, bar and dining room. Boma. A Library. Well stocked curio shop. Fully stocked wine cellar. Open vehicle game drives. Walking safaris. Massage sala. Bush breakfasts and gym.

CHILDREN: We regret, due to the inconvenience to other guests, we do not allow children under the age of 10, unless the whole camp is booked. We do not have triple suites.

ONLINE BOOKINGS: We accept bookings via OTAs (Online Travel Agents) or an API (Application Programme Interface). However, we cannot control uninterrupted and trouble free Internet connections which may result in a double booking or non-receipt. Please contact reservations by email to confirm your booking.

PROVISIONAL RESERVATIONS: All provisional reservations will be automatically released if not confirmed within 2 weeks of booking being made.

PAYMENT: A deposit of 20% of the total accommodation charge is required to confirm a provisional reservation and full payment is required 45 days prior to arrival. Ideally bookings should be settled via EFT. Deposit conditions may be waived for bookings from the

trade, tour operator and agents at the Lodge's discretion. Extras may be settled in camp. We accept all credit cards. We do not accept travellers cheques.

Peak Season Terms and Conditions: 20 December until 5 January. All Bookings over Christmas and New Year's Eve can only be secured once a 20% non-refundable deposit has been paid.

Group Reservations: Should the reservations department require the accommodation that is being held by the group for the same dates, we will request the group to supply us with an immediate 20% non-refundable deposit. A booking of 8 guests or more is classed as a group booking. Where 12 guests or more are requested a 50% non-refundable deposit is required.

CANCELLATIONS: Our cancellation policy is as follows:

- > 45-31 days – 50% of full amount
- > 30-15 days – 75% of full amount
- > 14 days or less – 100% of full amount

Bookings are not transferable

ARRIVAL / DEPARTURE: Guests may arrive any time from 14h00, and rooms are to be vacated by 11h00.

WHAT TO TAKE: Comfortable walking shoes, sun hat, sunglasses, sun block, cameras and binoculars, anti-malaria precautions (please consult your doctor / pharmacist) light, neutral coloured clothing, swimming costume, warm jackets are essential in winter (May - October).

DISTANCES: Johannesburg to Leopard Hills ± 6 hours (± 500 km). Nelspruit to Leopard Hills ± 2 hours (± 150 km)

GPS CO-ORDINATES: S 24° 47' 32.8" E 031° 22' 04.8"

DIRECTIONS TO LODGE:

Please make use of the map and directions and NOT the GPS coordinates.

- > From Johannesburg take the N4 to Nelspruit.
- > Once in Nelspruit, carry on towards White River, then take the R40, Main Road towards Hazyview.
- > Turn left at the T-junction into Hazyview.
- > At the 2nd set of traffic lights, turn right onto the R536 (Portia Shabangu), towards the Paul Kruger Gate.
- > Approximately 35km along this road, and just after the

Saringwa River, look out for signs indicating the Newington Gate / Sabi Sands and signs indicating "Huntington, Lilydale & Justicia" on the left hand side of the road.

- > Newington Gate accesses the Sabi Sands Reserve, in which Leopard Hills is located – so please follow these signs.
- > Turn left here, and follow this tar road for ± 9km.
- > You'll come to a 4 way crossing, turn right onto gravel road.
- > After about 1.8 km you will be at a T-junction, turn left.
- > Another 0.5 km further turn left again and this road leads to Newington Gate.
- > 1km further you'll find the Newington Gate where you will be required to pay an entrance fee.

PLEASE NOTE:

Newington Gate entrance fees are as follows:

R 385 per light vehicle (applies to vehicles under 3.5 tons).

R 176 per person (applicable fee payable per passenger entering the reserve via motor vehicle).

Prices subject to change.

- > Once through the gate, turn left. Follow the signs to Leopard Hills Private Game Reserve.

- > Should you need assistance at any time, please dial the following number: (013) 735 5141/2

FLIGHT & AIR TRANSFERS & PRIVATE CHARTERS:

PLEASE NOTE: Fly in: Landing Fee R505 per person per way (charged for arrival & departure if guests arrive and depart by air, subject to change).

Daily scheduled flights from Johannesburg International Airport to Leopard Hills with Federal Air.

Daily transfers from Johannesburg, Kruger Mpumalanga International, Skukuza & Hoedspruit Airports.

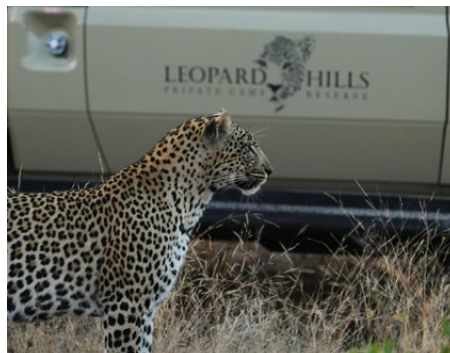
Transfers from any lodges in Sabi Sand.

Private charters are available on request.

Please note we require a 25% deposit in order to secure a ground or air transfer.

Helicopter flights to the Blyde River Canyon and Gods Window can be arranged on request.

PLEASE NOTE: Drones are strictly prohibited in the Sabi Sand Game Reserve, failure to comply with this rule will result in a heavy fine or arrest by reserve management.



CONTACT DETAILS

Reservations: Tel: +27 (0)11 326 0739 E-mail: reservations@leopardhills.com
 Central Reservations: Tel: +27 (0)66 022 7234 E-mail: lodgereservations@seasonsinafrika.com
 Lodge Tel: +27 (0)13 735 5141/2 Website: www.leopardhills.com
 Postal Address: P O Box 612, Hazyview, 1242, South Africa

Seasons in Africa
ADVENTURES • HOTELS • LODGES